



hallowed space

THIS CONVERTED CHURCH WAS ONCE FULL OF PARISHIONERS, BUT NOW THE OPEN SPACES ARE EITHER FILLED WITH PARTY-GOERS, OR ONE MAN AND HIS THREE-LEGGED CAT

Words **LeeAnn Yare** Photography **Larnie Nicolson**



KITCHEN The freestanding island – which was negotiated into the sale price – is what Andrew loves most about this room. “It’s generally the place everyone migrates to when people are over for a few drinks.” **OPPOSITE PAGE** The mezzanine bedroom is directly over the lounge – a place Andrew loves to relax and indulge in his great love of music.



NESTLED AMONGST A ROW of villas on a Grey Lynn street in Auckland is the Primitive Baptist Church of Saint Jude. Built somewhere between 1860 and 1880, the kauri church narrowly escaped demolition in 1991. Since then, it has become known simply as “The Church” – and as the home to a series of creative owners. Currently occupied by strategic planner Andrew Reinholds and his three-legged ocicat, Jimmy, these days there is more than one legacy to preserve.

“I have a great deal of respect for the previous owner, Inia Taylor – a very talented tattoo artist who moved The Church from the other side of Grey Lynn Park,” Andrew says. “I’ve always attempted to maintain the integrity he left it with – so the less cluttered I can keep this place, the better.”

Before he bought The Church in 2008, Andrew fell for everything it had to offer – including an incredible beamed ceiling, creaky character floors and an open mezzanine bedroom upstairs. “The mezzanine space is very open, but after the first few nights it all just seemed to make perfect sense,” he says. “Living in The Church is all about the wonderful freedom you feel when you’re here.”

Part of that ‘wonderful freedom’ is feeling like you’re far away from the stresses of the outside world – even though they’re really only metres away. “It can be uncannily ▷



ABOVE LEFT A range of green tones were selected from the Dulux Colours of New Zealand range – with Saint Bathans taking pole position. **ABOVE RIGHT** Being such a feature, the front door colour required some thought. In the end, a custom colour was created called ‘Church Green’ – a lush olive with yellow overtones in a full gloss paint.

“THE MEZZANINE SPACE IS VERY OPEN, BUT AFTER THE FIRST FEW NIGHTS IT ALL JUST SEEMED TO MAKE PERFECT SENSE. LIVING IN THE CHURCH IS ALL ABOUT THE WONDERFUL FREEDOM YOU FEEL WHEN YOU’RE HERE”

"IT CAN BE UNCANNILY QUIET HERE, THIS PLACE REALLY SEEMS TO KEEP YOU SAFE FROM ALL THE HUSTLE AND BUSTLE OF THE OUTSIDE WORLD"



ABOVE An electric-blue Smeg fridge complements kitchen's original stained glass windows – accidentally. "I'd be lying if I said I bought it to match, I just think Smeg fridges are cool." **RIGHT** Andrew loves to read. Built-in shelving houses his extensive array of books, including his collection of hardcovers by Edward Gorey.



RENOVATION | Auckland

OUR PLACE

with Andrew Reinholds

What's so appealing about living in Grey Lynn? It is just so relaxed – it's not like other inner-city Auckland suburbs which are trying so hard to impress. Grey Lynn still retains a real charm through its diversity, eccentricity and unaffected-ness.

This is a huge space, has it seen a few big parties? It is a great place for a party – in fact, the day after I took possession we had a very good friend's 30th birthday here. Unfortunately, at the last party my stereo got impounded.

Tips for choosing colour? From an exterior viewpoint, I think the surroundings of the house are just so important. You can't work in splendid isolation, all elements need to be taken into consideration.

Plans for the future? I'm still on the lookout for one or two more interesting pieces of art. I also need a really cool dresser for the bedroom.

quiet here," Andrew says. "This place really seems to keep you safe from all the hustle and bustle of the outside world."

And there's no time this strange inner-city isolation is more apparent than on a wild, stormy night. "It's wonderful to hear the rain on the roof and the branches of the trees knock against the walls," says Andrew. "I'm sure if these walls could talk, they'd have plenty of incredible stories to tell."

Which isn't, however, to say that life in The Church has always been so idyllic over the colder months. "The first winter I spent here was so cold, you could literally see your breath and feel the wind rushing through the gaps in the walls," Andrew recalls. "I have no idea how the previous owners survived!"

Consequently, the walls and floor have now been fully insulated and a central heating system has been installed. ▷



ABOVE Original features that reflect the building's former life as a church have been carefully preserved, including this gorgeous set of echoing arches.
RIGHT Doors in the master bedroom lead to the built-in wardrobe, then up a ladder to the turret.



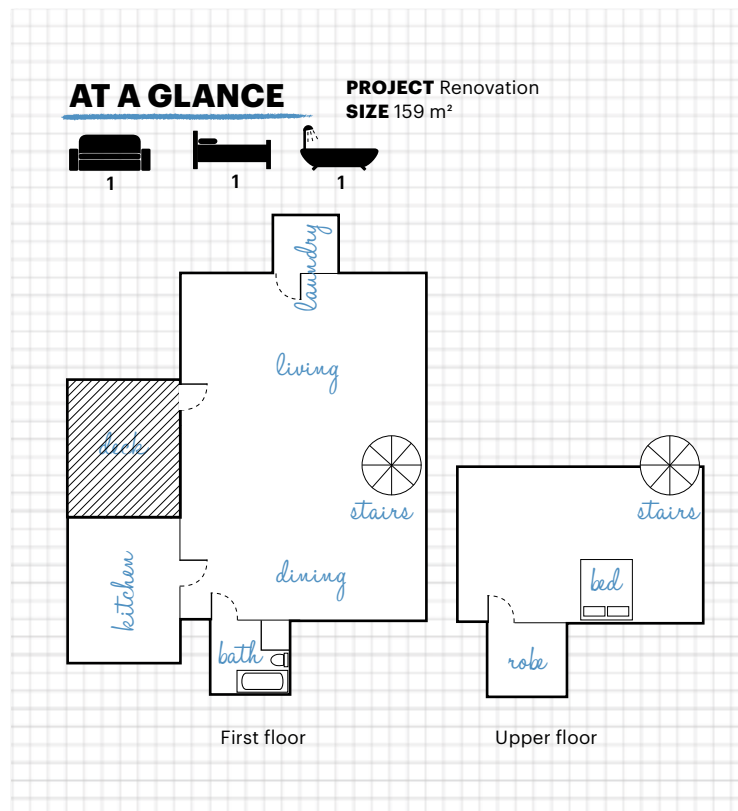
Other improvements Andrew has made include building a custom walk-in wardrobe adjacent to the master bedroom, a pantry in the kitchen, and a new colour scheme. A completely new colour scheme.

Andrew says: "I like dark colours – greens, browns, blacks and greys. I'm not sure why." He is, however, sure that he was not a fan of The Church's previous paint: a hippy-toasting palette of apricot, blue and maroon.

Inspired by the mature garden surrounding The Church, and feeling there wasn't a strong enough connection between said garden and its imposing wooden occupant, Andrew called on colour consultant and interior designer Helen Wilcock from **Design Spec**. "What was great about consulting with Helen was that she was able to interpret my vision into something that was not only practical, but also differentiating. I really believe she's helped to give the place a new lease of life – I doubt it has ever looked better."

Andrew says his style has evolved over the years. "I'd like to think it's now one of quiet confidence and strength. I think that is definitely reflected in the colours I prefer, as well as the designers I lean towards, such as Carol Christian Poell and Ann Demeulemeester."

And, The Church, does that reflect his personality? "Yes. It's taken a little while, but I do think I've finally found a place that suits me and my outlook perfectly." ■



OPEN PLAN LIVING
 The staircase leads up to the mezzanine bedroom, while a stag trophy sets the masculine tone of the lounge.

Inspiration

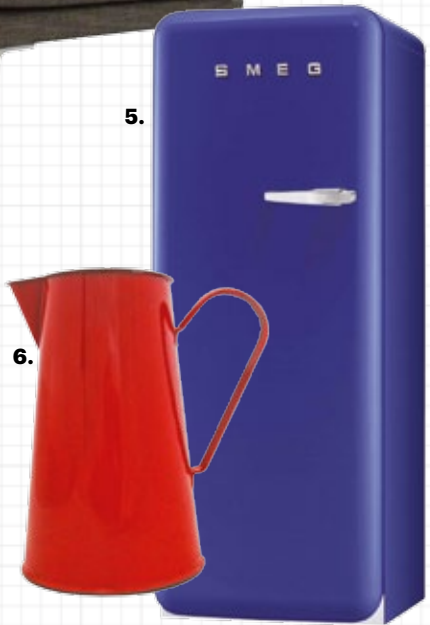
MODERN INTEGRITY

Style ideas from Andrew Reinholds' home



CUES FROM THIS HOME'S TRADITIONAL HERITAGE RESIDE PEACEFULLY ALONGSIDE MORE MODERN MASCULINE PIECES

MOOD BOARD



1. Miller Three-Seater and Chaise, \$3420 each, plus 2x 12.2m fabric, from Forma 2. Bonnie and Neil Cushion, \$130; Graphik Cushion, \$110, both from collected.co.nz 3. Enamel candle stick holder and beeswax candle, \$25; short beeswax candle, \$13.50, both from Flotsam and Jetsam 4. Cloche lightshade, \$125, from icotraders.co.nz 5. Smeg fridge, \$xxxx from Kitchen Things 6. Enamel jug, \$72, from Flotsam and Jetsam 7. Raisin Wool Felt, \$60p/m, from marthas.co.nz 8. Dulux Olive Ocre 9. Dulux Oyster Linen 10. Dulux Ahipara Double 11. Middle Earth rug, \$POA, from sourcemonial.co.nz